

# MARAMATAKA CALENDAR 23/24



te kāunihera ā-rohe o  
**matamata-piako**  
district council



Te Kāunihera ā-rohe o  
**matamata-piako**  
district council



**Para  
Rubbish**

Think before you throw  
Make landfill your last choice

Whakaiti | Whakamahi anō | Hangarua  
Reduce | Reuse | Recycle

Te Kāunihera ā-rohe o  
**matamata-piako**  
district council



**Para Kai  
Food Scraps**





# Message from the mayor

As Kiwis, we are getting a better understanding about the waste problem we face and know reducing the amount of rubbish we create in the first place will go a long way in our collective effort to tackle it.

My previous role as chairman of the Agrecovery Foundation, District Councillor and now Mayor have exposed me to the multiple challenges we have when dealing with our waste here, in New Zealand. The evolution of consumerism has created a 'throw-away society' or linear economy, where we buy, use and throw away resources.

As we transition into a circular economy, we will strive to make resources go for a couple more rounds by reusing, repurposing and recycling before disposing to landfill. How we deal with food waste is a great example of how we can move from a linear to circular economy; from buying food, eating food, composting food scraps and then using the compost to grow more food.

Statistics show we are recycling more, which is great, but they also show what we send to landfill is increasing per capita. Sending rubbish to landfill is getting more expensive every year and the convenience of this is not sustainable in the long-term.

We understand the importance of managing our waste in a way that is better for our environment and have a plan to make it easier for households to dispose waste in a way that diverts more recyclables from landfill. A part of this plan is introducing a new kerbside collection system to households, starting in September 2023.

When our kerbside contract was coming up for renewal, we consulted on changing the kerbside rubbish collection service to a wheelie bin for rubbish, a bin for food scraps and recycling bins. This proposal received strong community support in 2021. Audits of rubbish bags and waste wheelie bins show 30% of the volume is food waste. The new food scraps bin will therefore reduce the volume of waste going to landfill significantly. The new system aligns with the national changes currently proposed by Ministry for the Environment with the introduction of new national standards for kerbside services.

It is also an important step in our Waste Management and Minimisation Plan adopted in 2021 that aspires for our district to be zero waste by 2038. It may seem ambitious but figuring out how to deal with the waste we create in a cost effective way that is better for our environment will benefit all of us. We know change is hard and we hope to make the switch as smooth as possible. In the meantime, keep up the good work with your recycling efforts and know the small changes you make to minimise waste all adds up. If you have any questions, check the FAQs at [mpdc.nz/kerbside](https://mpdc.nz/kerbside)

**Adrienne Wilcock**  
Mayor



# Start date and new pickup dates

New collections begin September 5.  
The new kerbside collection days will be:

 **Matamata (incl. Waharoa and Walton): Tuesday**

 **Morrinsville (incl. Tahuna): Wednesday**

 **Te Aroha (incl. Waitoa and Waihou): Thursday**

Week 1



On the kerb by 7:30 AM



Week 2



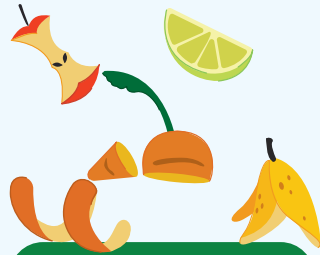
On the kerb by 7:30 AM



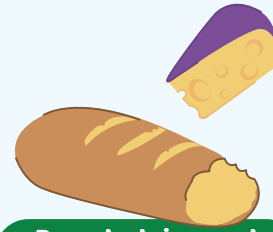


# What goes in your food scraps bin and what doesn't

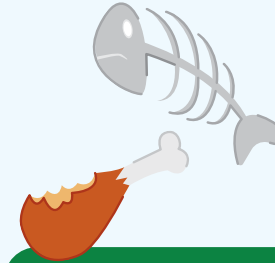
Collected every week



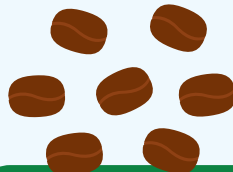
Fruit and vegetables



Bread, dairy and cooked food



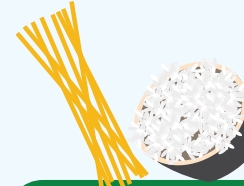
Meat and bones



Coffee grounds



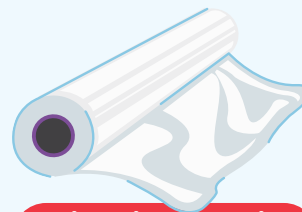
Egg shells



Pasta and rice



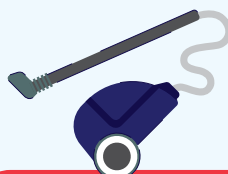
Compostable packaging or plastic bags



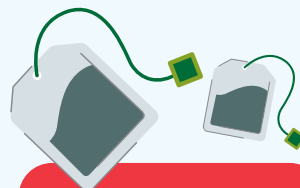
Cling film and bin liners



Garden waste



Vacuum cleaner dust



Teabags



Liquids





# What goes in your recycling bin and what doesn't

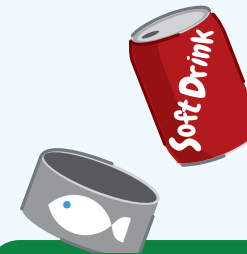
Collected fortnightly



Clean plastic containers 1, 2 & 5



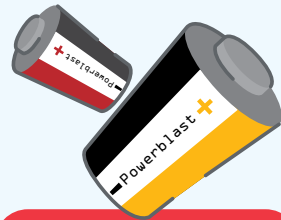
Paper and cardboard



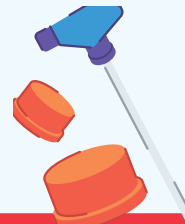
Tins and cans



Coffee cups



Batteries



Lids



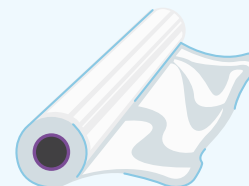
Drink cartons



Styrofoam



Spray cans



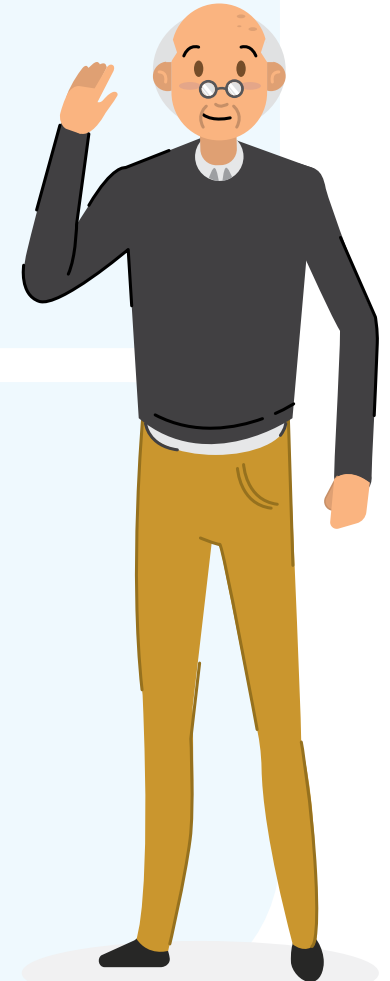
Plastic bags, cling film, and soft plastics





# What goes in your glass crate and what doesn't

Collected fortnightly





# What goes in your rubbish bin and what doesn't

Collected fortnightly



Anything that doesn't belong in your food scrap, recycling or glass bins, and that can't be reused should go in your rubbish bin.



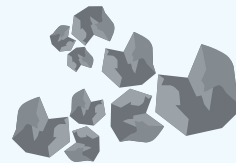
There are some exceptions - our trucks can't collect these hazardous items:



Medical waste



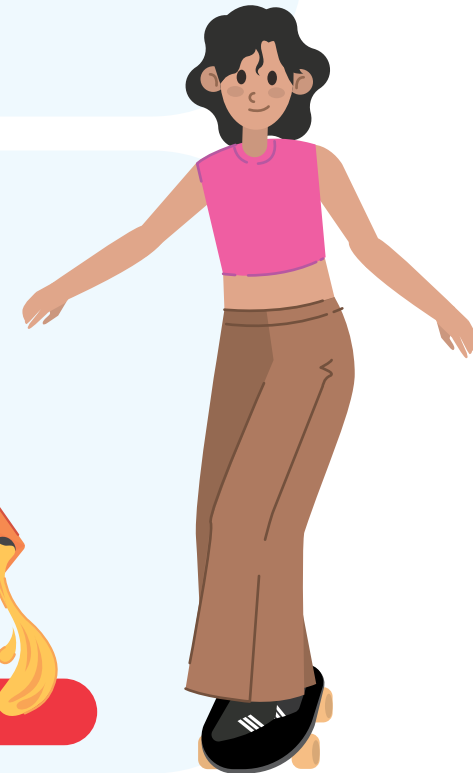
Hazardous materials



Ashes



Liquids





# FAQS

**Q: Will my pre-paid bags be collected after 1 September 2023?**

**A:** No, but for a while you'll still be able to drop off the official MPDC bags free of charge at Transfer Stations.

**Q: Will the rubbish, recycling and glass all be collected in the same fortnight?**

**A:** No. One week you will have your recycling bin (paper, cardboard, tins and hard plastic) and glass crate collected, and on the alternate week you will have your rubbish bin collected.

The food scraps bin will be collected every week. To get weekly kerbside reminders download the free Antenno App.

**Q: I don't need a food scrap bin because I compost my food waste**

**A:** Home composting is great, and if you're already doing this, we encourage you to keep doing it!

The food scraps bin can still be used for things that don't go in your compost bin (like meat scraps, bones, eggs shells, bread crusts etc) and for things that don't compost well (like citrus scrap, fruit stones, corn cobs etc).

**Q: Why does the rubbish truck pick up my recycling? Is it going to landfill?**

**A:** The trucks collecting rubbish and recycling are dual purpose. One week they collect rubbish. They are cleaned out to collect recycling the following week. The truck that collects food scraps and glass has two separate compartments, so can collect both of these in the same truck. This reduces our carbon foot print and also the cost by multi-purposing each truck.

Rubbish is taken to the landfill at Tirohia. Food scraps go to Tirohia Energy Park where it will be processed into compost. Glass and recycling will be processed at a nearby facility until the Tirohia Energy Park is upgraded to accept these materials in 2024.

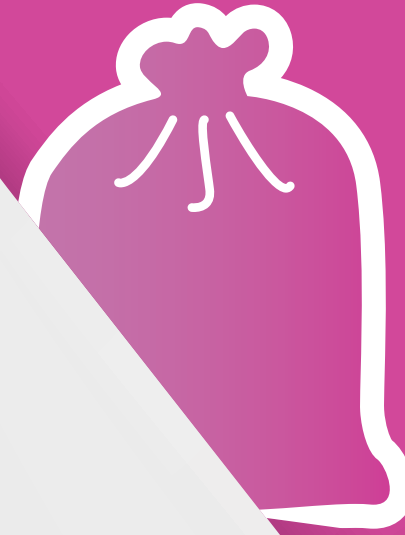
For more FAQs visit [mpdc.nz/kerbside](https://mpdc.nz/kerbside).



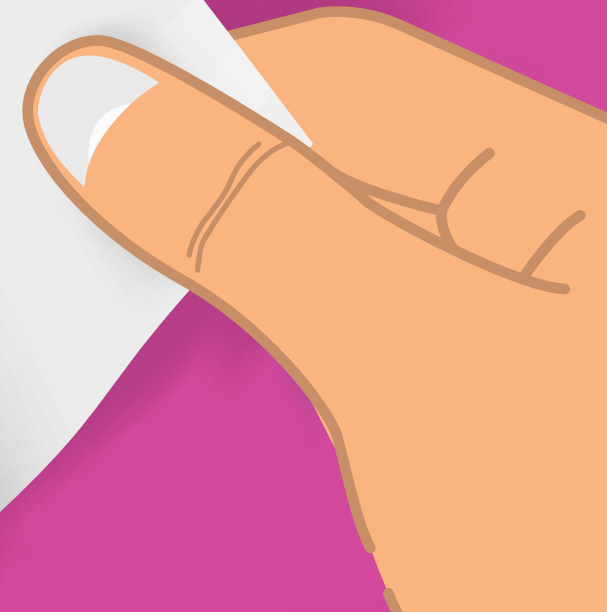


# Let's get sorted!

You may have your new red and green bins but don't use them yet - the new service will begin on **September 5**. In the meantime come along to one of our community workshops so that you're all sorted when the new services start. Check out the dates below to find one close to you.



Keep using your pink rubbish bags until the **end of August.**



# HŌNGONGOI 2023 JULY

Rātapu Sunday	Rāhina Monday	Rātū Tuesday	Rāapa Wednesday	Rāpare Thursday	Rāmere Friday	Rāhoroi Saturday
30	Last day to register your dog 31					1
2	3	4	5	6	7	8
9	10	11	12	13	Matariki 14	15
16	School term 3 starts 17	18	19	20	21	22
23	Let's get sorted Matamata community workshop 10AM & 6:30PM 24	Let's get sorted Morrinsville community workshop 10AM & 6:30PM 25	Let's get sorted Te Aroha community workshop 9:30 & 6:30PM 26	27	28	29

# HERE-TURI-KŌKĀ 2023 AUGUST

Rātapu Sunday	Rāhina Monday	Rātū Tuesday	Rāapa Wednesday	Rāpare Thursday	Rāmere Friday	Rāhoroi Saturday
		1	2	3	4	5
6	7	8	9	10	11	12
13	14	15	16	17	18	19
20	21	22	23	24	Last day to pay your rates 25	26
27	28	29	30	31		

For more info on the community workshops visit [mpdc.nz/kerbside](https://mpdc.nz/kerbside).

● **Te Aroha**
● **Matamata** Incl. Waharoa, Walton
 ● **Morrinsville** Incl. Waihou, Waitoa, Tahuna
 **Rubbish**
**Recycling**

Transfer stations opening hours:

## 10AM - 4PM

● **Te Aroha:** Wed, Fri & Sun  
● **Matamata:** Tue, Wed, Thu, Sat & Sun  
● **Morrinsville:** Mon, Tue, Thu, Sat & Sun

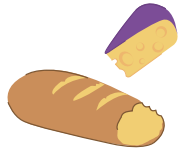


# Start using your new bins!



Collected every week

Collected fortnightly with your food scraps bin



Bread, dairy and cooked food



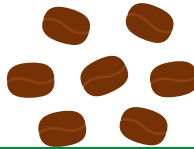
Egg shells



Fruit and vegetables



Meat and bones



Coffee grounds



Pasta and rice



Compostable packaging or plastic bags



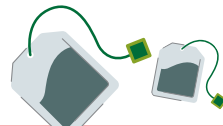
Vacuum cleaner dust



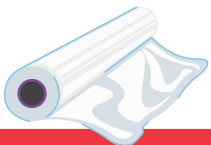
Garden waste



Liquids



Teabags



Cling film and bin liners



Anything that doesn't belong in your food scrap, recycling or glass bins, and that can't be reused should go in your rubbish bin.



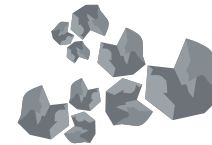
There are some exceptions - our trucks can't collect these hazardous items:



Medical waste



Hazardous materials
















Ashes



Liquids
















# MAHURU 2023 SEPTEMBER

Rātapu Sunday	Rāhina Monday	Rātū Tuesday	Rāapa Wednesday	Rāpare Thursday	Rāmere Friday	Rāhoroi Saturday
					 1	2
Father's Day 3	4	MM 	MVL 	TA 	8	9
10	Rate Rebate appointments open 11	MM 	MVL 	TA 	15	16
17	18	MM 	MVL 	TA 	School term 3 ends 22	23
Daylight Savings Starts 24	25	MM 	MVL 	TA 	29	30

● Rubbish   
 ● Recycling   
 ● Glass   
 ● Food scraps  
**MM:** Matamata (Incl. Waharoa and Walton)   
**TA:** Te Aroha (incl. Waitoa and Waihou)  
**MVL:** Morrinsville (incl. Tahuna)

# WHIRINGA-Ā-NUKU 2023 OCTOBER

Rātapu Sunday	Rāhina Monday	Rātū Tuesday	Rāapa Wednesday	Rāpare Thursday	Rāmere Friday	Rāhoroi Saturday
1	2	MM 	MVL 	TA 	6	7
8	School Term 4 starts 9	MM 	MVL 	TA 	13	14
15	16	MM 	MVL 	TA 	20	21
22	Labour Day 23	MM 	MVL 	TA 	27	28
29	30	MM 				

**Transfer stations opening hours: 10AM- 4PM**  
**MM:** Tue, Wed, Thu, Sat & Sun   
**TA:** Wed, Fri & Sun   
**MVL:** Mon, Tue, Thu, Sat & Sun



## A gift for future generations

Food scraps in landfill create greenhouse gases. Food scraps in your green bin get turned into compost which helps reduce the effects of climate change for future generations.

# WHIRINGA-Ā-RANGI 2023 NOVEMBER

Rātapu Sunday	Rāhina Monday	Rātū Tuesday	Rāapa Wednesday	Rāpare Thursday	Rāmere Friday	Rāhoroi Saturday
			MVL ●● 1	TA ●● 2	3	4
5	6	MM ●●● 7	MVL ●●● 8	TA ●●● 9	10	11
12	13	MM ●● 14	MVL ●● 15	TA ●● 16	17	18
19	20	MM ●●● 21	MVL ●●● 22	TA ●●● 23	24	25
26	Last day to pay your rates 27	MM ●● 28	MVL ●● 29	TA ●● 30		

● Rubbish ● Recycling ● Glass ● Food scraps  
 MM: Matamata (Incl. Waharoa and Walton) TA: Te Aroha (incl. Waitoa and Waihou)  
 MVL: Morrinsville (incl. Tahuna)

# HAKIHEA 2023 DECEMBER

Rātapu Sunday	Rāhina Monday	Rātū Tuesday	Rāapa Wednesday	Rāpare Thursday	Rāmere Friday	Rāhoroi Saturday
31					1	2
3	4	MM ●●● 5	MVL ●●● 6	TA ●●● 7	8	9
10	11	MM ●● 12	MVL ●● 13	TA ●● 14	15	16
17	18	MM ●●● 19	MVL ●●● 20	TA ●●● 21	Council offices close 12 noon 22	23
24	Christmas Day Transfer stations closed 25	Boxing Day Transfer stations closed MM ●● 26	MVL ●● 27	TA ●● 28	29	30

Transfer stations opening hours: **10AM-4PM**  
 MM: Tue, Wed, Thu, Sat & Sun TA: Wed, Fri & Sun MVL: Mon, Tue, Thu, Sat & Sun



# What goes where?



Keep it clean! Remove lids and rinse recycling before putting in the yellow bin. Oil marks on cardboard containers are ok - just make sure there is no food left.





# KOHITĀTEA JANUARY

Rātapu Sunday	Rāhina Monday	Rātū Tuesday	Rāapa Wednesday	Rāpare Thursday	Rāmere Friday	Rāhoroi Saturday
	New Year's Day 1	New Year's Holiday MM 2	MVL 3	TA 4	5	6
7	Council Offices open 8AM 8	MM 9	MVL 10	TA 11	12	13
14	15	MM 16	MVL 17	TA 18	19	20
21	22	MM 23	MVL 24	TA 25	26	27
28	Auckland Anniversary Day 29	MM 30	MVL 31			

● Rubbish ● Recycling ● Glass ● Food scraps  
 MM: Matamata (incl. Waharoa and Walton) TA: Te Aroha (incl. Waitoa and Waihou)  
 MVL: Morrinsville (incl. Tahuna)

# HUI-TANGURU FEBRUARY

Rātapu Sunday	Rāhina Monday	Rātū Tuesday	Rāapa Wednesday	Rāpare Thursday	Rāmere Friday	Rāhoroi Saturday
				TA 1	2	3
4	5	Waitangi Day 6	MM 7	MVL 8	TA 9	10
11	12	MM 13	MVL 14	TA 15	16	17
18	19	MM 20	MVL 21	TA 22	23	24
Last day to pay your rates 25	26	MM 27	MVL 28	TA 29		

Transfer stations opening hours: **10AM-4PM**  
 MM: Tue, Wed, Thu, Sat & Sun TA: Wed, Fri & Sun MVL: Mon, Tue, Thu, Sat & Sun

# Handy tips!



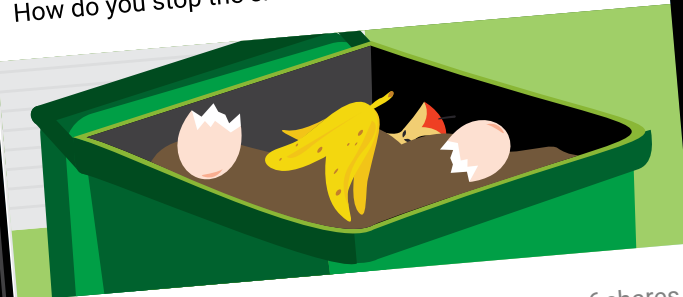
social network



**Aroha 09**

Suggested for you · 2d

How do you stop the smell!? 🤢🤢 Our new bin stinks!



45

14 comments 6 shares



Like



Comment



Share



**Kerry**

We freeze our food scraps till we need to put them out! 🧊🧊🧊

1 d

Like

Reply

5



**Ron**

yeah we use it heaps for tipping the kids lunchbox leftovers 😂😂😂😂

1 d

Like

Reply

5



**Tane**

Give it a good wash after collection and definitely keep it in the shade

1 d

Like

Reply

5

# POUTŪ-TE-RANGI MARCH

Rātapu Sunday	Rāhina Monday	Rātū Tuesday	Rāapa Wednesday	Rāpare Thursday	Rāmere Friday	Rāhoroi Saturday
Easter Sunday 31					1	2
3	4	MM ● ●	MVL ● ●	TA ● ●	8	9
10	11	MM ● ● ●	MVL ● ● ●	TA ● ● ●	15	16
17	18	MM ● ●	MVL ● ●	TA ● ●	22	23
24	25	MM ● ● ●	MVL ● ● ●	TA ● ● ●	Good Friday Transfer stations closed 29	30

● Rubbish ● Recycling ● Glass ● Food scraps  
**MM:** Matamata (incl. Waharoa and Walton) **TA:** Te Aroha (incl. Waitoa and Waihou)  
**MVL:** Morrinsville (incl. Tahuna)

# PAENGA-WHĀWHĀ APRIL

Rātapu Sunday	Rāhina Monday	Rātū Tuesday	Rāapa Wednesday	Rāpare Thursday	Rāmere Friday	Rāhoroi Saturday
	Easter Monday 1	MM ● ●	MVL ● ●	TA ● ●	5	6
Daylight Savings ends 7	8	MM ● ● ●	MVL ● ● ●	TA ● ● ●	School Term 1 ends 12	13
14	15	MM ● ●	MVL ● ●	TA ● ●	19	20
21	22	MM ● ● ●	MVL ● ● ●	Anzac Day Transfer stations open from 1PM 25	TA ● ● ●	27
28	School Term 2 starts 29	MM ● ●				

Transfer stations opening hours: **10AM-4PM**  
**MM:** Tue, Wed, Thu, Sat & Sun **TA:** Wed, Fri & Sun **MVL:** Mon, Tue, Thu, Sat & Sun

# Nourish the land...

Traditionally, tangata whenua, people of the land, produced only organic waste, which could be managed by returning these to the land. Keeping our food scraps out of landfill means they can be composted and used to nourish the land again, whāngai te whenua anō.

Waiti

Waipuna-ā-rahi

Waitā

Ururangi

Matariki

Tupu-ā-nukū

Tupu-ā-rangi



# HARATUA MAY

Rātapu Sunday	Rāhina Monday	Rātū Tuesday	Rāapa Wednesday	Rāpare Thursday	Rāmere Friday	Rāhoroi Saturday
			MVL ●● 1	TA ●● 2	3	4
5	6	MM ●●● 7	MVL ●●● 8	TA ●●● 9	10	11
Mother's Day 12	13	MM ●● 14	MVL ●● 15	TA ●● 16	17	18
19	20	MM ●●● 21	MVL ●●● 22	TA ●●● 23	24	25
26	Last day to pay your rates 27	MM ●● 28	MVL ●● 29	TA ●● 30	31	

● Rubbish ● Recycling ● Glass ● Food scraps  
 MM: Matamata (incl. Waharoa and Walton) TA: Te Aroha (incl. Waitoa and Waihou)  
 MVL: Morrinsville (incl. Tahuna)

# PIPIRI JUNE

Rātapu Sunday	Rāhina Monday	Rātū Tuesday	Rāapa Wednesday	Rāpare Thursday	Rāmere Friday	Rāhoroi Saturday
Rate rebate applications close 30						1
2	King's Birthday 3	MM ●●● 4	MVL ●●● 5	TA ●●● 6	7	8
9	10	MM ●● 11	MVL ●● 12	TA ●● 13	14	15
16	17	MM ●●● 18	MVL ●●● 19	TA ●●● 20	21	22
23	24	MM ●● 25	MVL ●● 26	TA ●● 27	Matariki 28	29

Transfer stations opening hours: **10AM-4PM**  
 MM: Tue, Wed, Thu, Sat & Sun TA: Wed, Fri & Sun MVL: Mon, Tue, Thu, Sat & Sun



## Use both!

We've got our own compost system going at home, but there are some things we don't put in it, like meat scraps, bones, fruit stones and corn cobs.

I just pop those in the green food scraps bin now instead of the rubbish.



# HŌNGONGOI JULY

Rātapu Sunday	Rāhina Monday	Rātū Tuesday	Rāapa Wednesday	Rāpare Thursday	Rāmere Friday	Rāhoroi Saturday
		MM ●●●	MVL ●●●	TA ●●●	School term 2 ends	
1		MM ●●●	MVL ●●●	TA ●●●	5	6
7	8	MM ●●●	MVL ●●●	TA ●●●	12	13
14	15	MM ●●●	MVL ●●●	TA ●●●	19	20
21	School term 3 starts	MM ●●●	MVL ●●●	TA ●●●	26	27
28	29	MM ●●●	MVL ●●● Last day to register your dog			

● Rubbish ● Recycling ● Glass ● Food scraps  
**MM:** Matamata (Incl. Waharoa and Walton) **TA:** Te Aroha (incl. Waitoa and Waihou)  
**MVL:** Morrinsville (incl. Tahuna)

# HERE-TURI-KŌKĀ AUGUST

Rātapu Sunday	Rāhina Monday	Rātū Tuesday	Rāapa Wednesday	Rāpare Thursday	Rāmere Friday	Rāhoroi Saturday
				TA ●●●		
				1	2	3
		MM ●●●	MVL ●●●	TA ●●●	9	10
4	5	MM ●●●	MVL ●●●	TA ●●●	16	17
11	12	MM ●●●	MVL ●●●	TA ●●●	23	24
18	19	MM ●●●	MVL ●●●	TA ●●●	30	31
25	Last day to pay your rates	MM ●●●	MVL ●●●	TA ●●●		

Transfer stations  
**opening hours: 10AM- 4PM**  
**MM:** Tue, Wed, Thu, Sat & Sun **TA:** Wed, Fri & Sun **MVL:** Mon, Tue, Thu, Sat & Sun

1



2



3



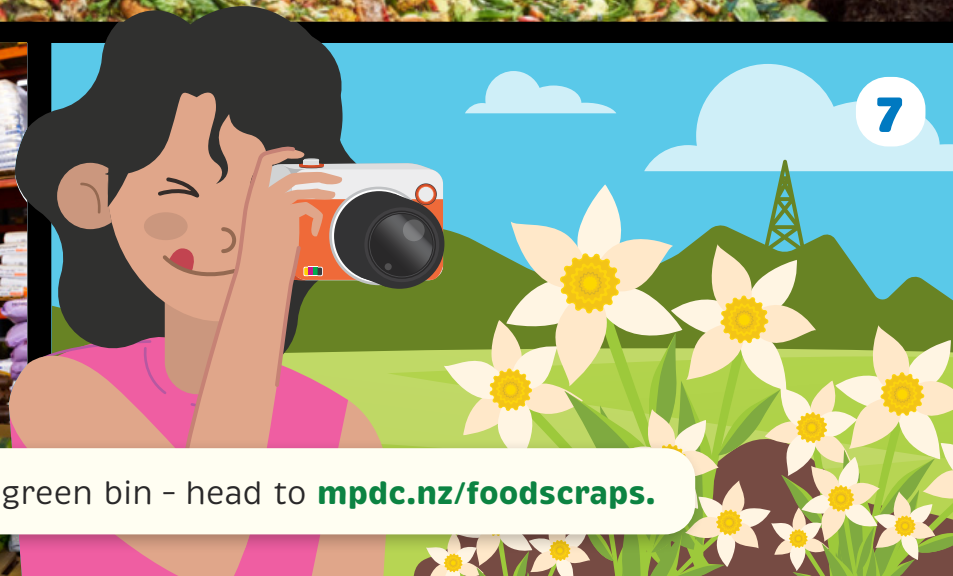
4

# The Cycle

6



7



5



To read more about what happens to the food scraps in your green bin - head to [mpdc.nz/foodscraps](https://mpdc.nz/foodscraps).



# MAHURU SEPTEMBER

Rātapu Sunday	Rāhina Monday	Rātū Tuesday	Rāapa Wednesday	Rāpare Thursday	Rāmere Friday	Rāhoroi Saturday
Father's Day 1	2	MM 3	MVL 4	TA 5	6	7
8	9	MM 10	Rate rebate appointments open MVL 11	TA 12	13	14
15	16	MM 17	MVL 18	TA 19	20	21
22	23	MM 24	MVL 25	TA 26	School Term 3 ends 27	28
Daylight Saving starts 29	30					

● Rubbish   
 ● Recycling   
 ● Glass   
 ● Food scraps  
**MM:** Matamata (incl. Waharoa and Walton)   
**TA:** Te Aroha (incl. Waitoa and Waihou)  
**MVL:** Morrinsville (incl. Tahuna)

# WHIRINGA-Ā-NUKU OCTOBER

Rātapu Sunday	Rāhina Monday	Rātū Tuesday	Rāapa Wednesday	Rāpare Thursday	Rāmere Friday	Rāhoroi Saturday
		MM 1	MVL 2	TA 3	4	5
6	7	MM 8	MVL 9	TA 10	11	12
13	School Term 4 starts 14	MM 15	MVL 16	TA 17	18	19
20	21	MM 22	MVL 23	TA 24	25	26
27	Labour day 28	MM 29	MVL 30	TA 31		

**Transfer stations opening hours: 10AM-4PM**  
**MM:** Tue, Wed, Thu, Sat & Sun   
**TA:** Wed, Fri & Sun   
**MVL:** Mon, Tue, Thu, Sat & Sun

# The new normal!



Need an extra glass recycling bin this summer?  
Head to [mpdc.nz/kerbside](https://mpdc.nz/kerbside) to find out how.



\*Maximum 2 crates per property

# WHIRINGA-Ā-RANGI NOVEMBER

Rātapu Sunday	Rāhina Monday	Rātū Tuesday	Rāapa Wednesday	Rāpare Thursday	Rāmere Friday	Rāhoroi Saturday
					1	2
3	4	MM ● ● ●	MVL ● ● ●	TA ● ● ●	8	9
10	11	MM ● ● ●	MVL ● ● ●	TA ● ● ●	15	16
17	18	MM ● ● ●	MVL ● ● ●	TA ● ● ●	22	23
24	Last day to pay your rates	MM ● ● ●	MVL ● ● ●	TA ● ● ●	29	30

● Rubbish ● Recycling ● Glass ● Food scraps  
**MM:** Matamata (incl. Waharoa and Walton) **TA:** Te Aroha (incl. Waitoa and Waihou)  
**MVL:** Morrinsville (incl. Tahuna)

# HAKIHEA DECEMBER

Rātapu Sunday	Rāhina Monday	Rātū Tuesday	Rāapa Wednesday	Rāpare Thursday	Rāmere Friday	Rāhoroi Saturday
1	2	MM ● ● ●	MVL ● ● ●	TA ● ● ●	6	7
8	9	MM ● ● ●	MVL ● ● ●	TA ● ● ●	13	14
15	16	MM ● ● ●	MVL ● ● ●	TA ● ● ●	School term 4 ends	21
22	23	MM ● ● ●	Christmas Day	Boxing Day	TA ● ● ●	28
29	30	MM ● ● ●				

Transfer stations opening hours: **10AM-4PM**  
**MM:** Tue, Wed, Thu, Sat & Sun **TA:** Wed, Fri & Sun **MVL:** Mon, Tue, Thu, Sat & Sun



## Food scraps bin

Collected every week



## Recycling bin

Collected fortnightly,  
week 2



## Glass crate

Collected fortnightly,  
week 2



## Rubbish bin

Collected  
fortnightly, week 1



Fruits and vegetables

Bread, dairy and cooked food

Meat and bones

Pasta and rice

Coffee grounds

Egg shells

Plastic containers 1, 2 & 5

Paper and cardboard

Tins and cans

Glass bottles

Glass jars



Cling film and bin liners

Garden waste

Vacuum cleaner dust

Teabags

Liquids

Compostable packaging or  
plastic bags

Coffee cups

Batteries

Lids

Drink cartons

Styrofoam

Spray cans

Plastic bags, cling film, and  
soft plastics

Tableware

Broken glass

Mirror or window glass

Light bulbs

Lids

Anything that doesn't belong in your food scrap, recycling or glass bins, and that can't be reused should go in your rubbish bin.

There are some exceptions - our trucks can't collect these hazardous items:

Medical waste

Hazardous materials

Ashes

Batteries

Liquids