

# AVENUE ROAD NORTH PLAN CHANGE

GRAPHIC SUPPLEMENT

FEBRUARY 2024



# Avenue Road North Plan Change



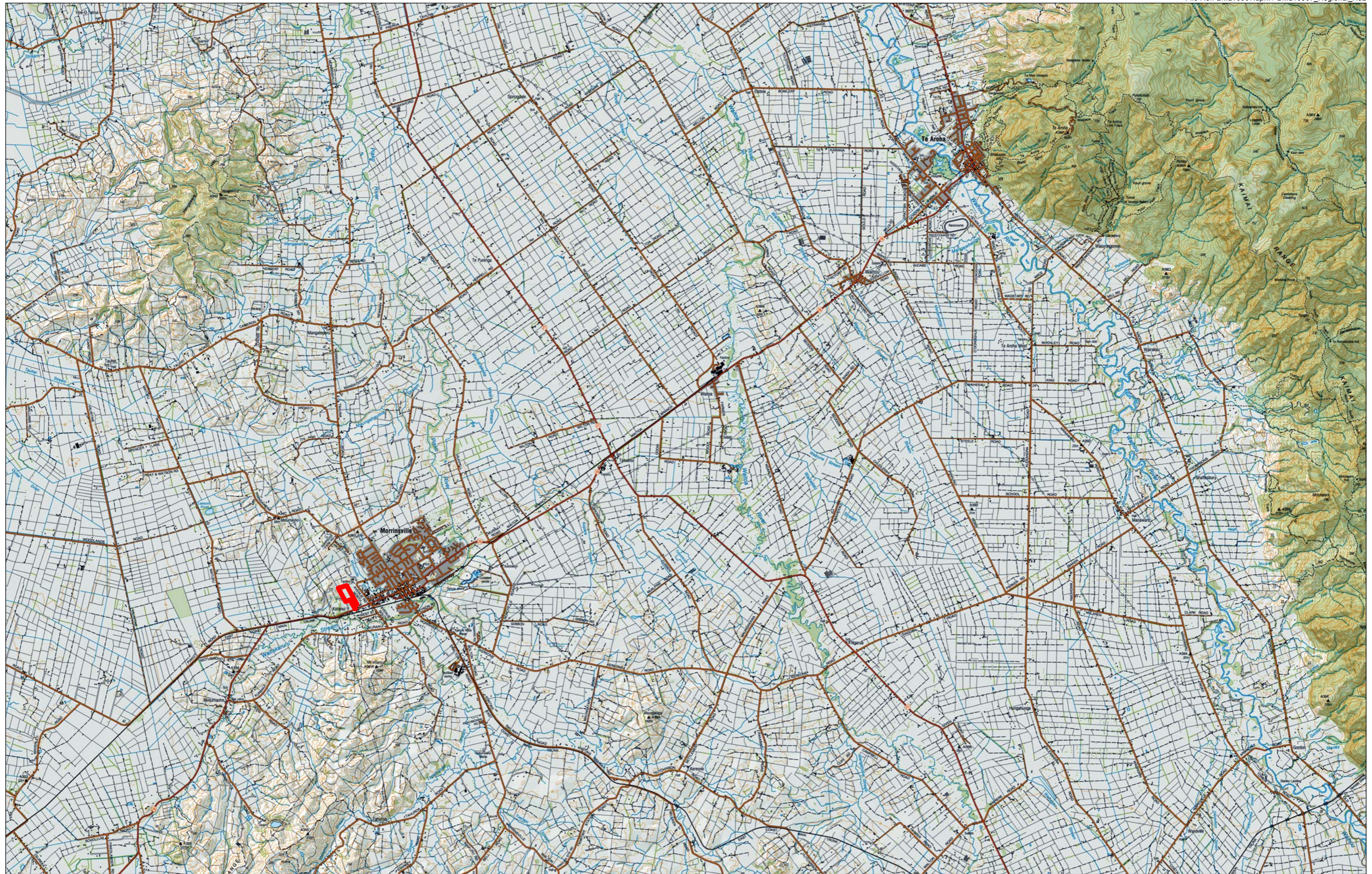
## Contents

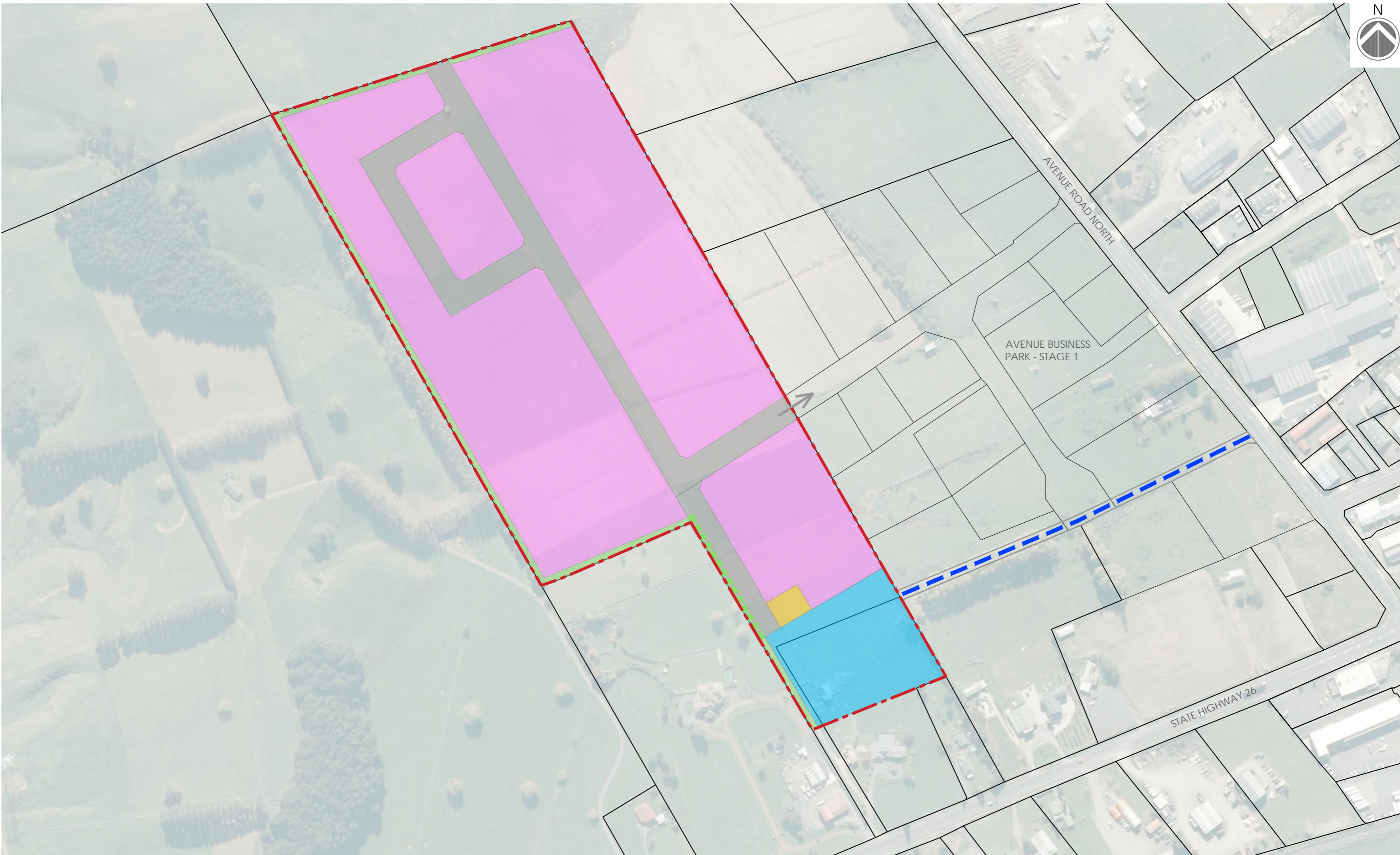
### MAPS

- FIGURE 1: Context Map - Regional
- FIGURE 2: Avenue Development Area Plan
- FIGURE 3: Planning Context
- FIGURE 4: Landscape Buffer Planting
- FIGURE 5: Viewpoint Locations

### SITE PHOTOGRAPHS




- VP1: Panoramas taken along SH26, looking northeast towards the site
- VP2: Panoramas taken along SH26, looking north towards the site
- VP3A&3B: Panoramas taken from Property 2579, SH26
- VP4&5: Panoramas looking south across the site
- VP6&7: Panoramas taken along SH26 looking northwest towards the site
- VP8&9: Panoramas taken along Avenue Rd North towards the site
- VP10&11: Panoramas taken looking south from site











# AVENUE BUSINESS PARK DEVELOPMENT AREA PLAN

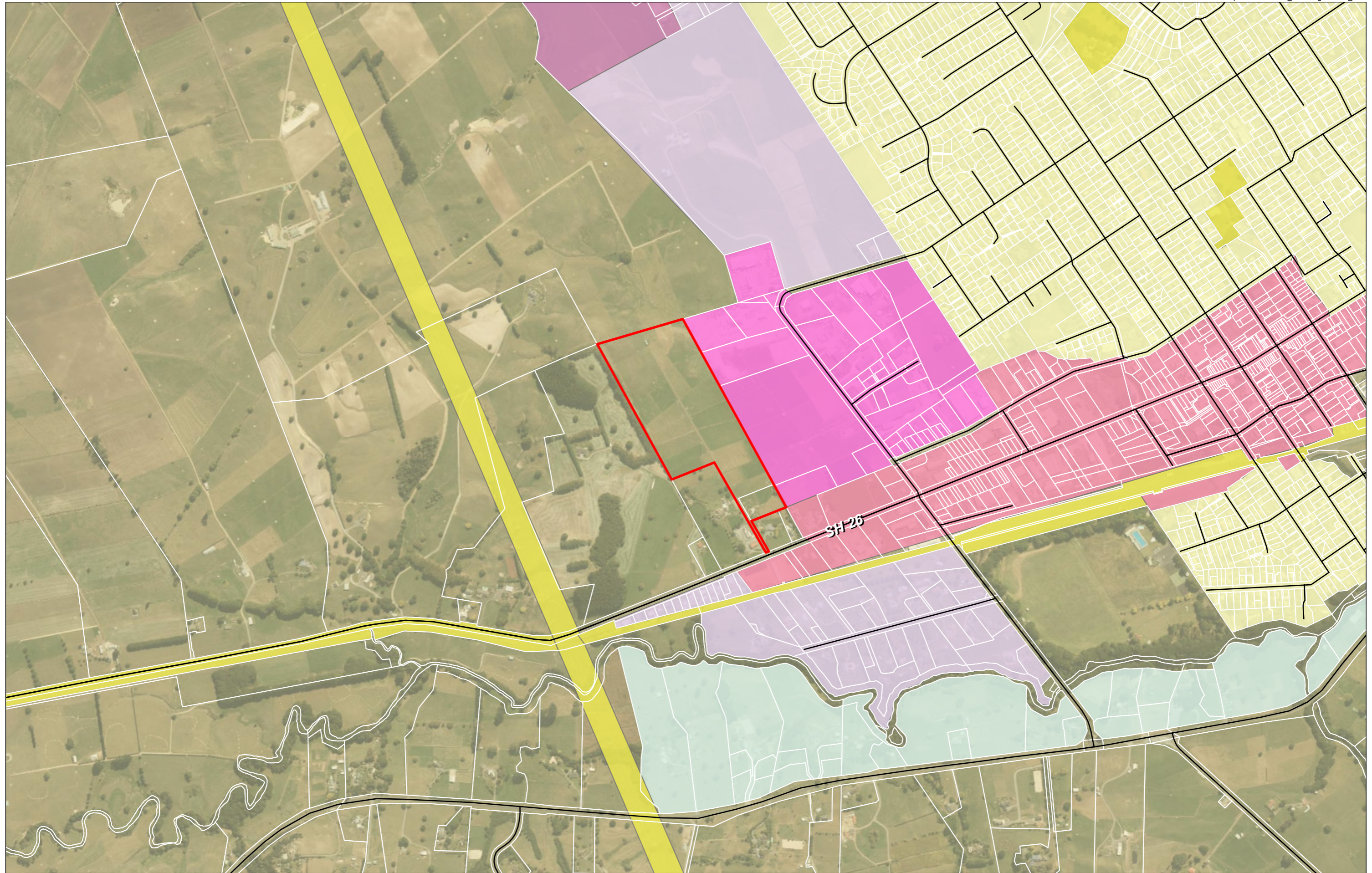
## LEGEND

-  DEVELOPMENT PLAN AREA
-  INDUSTRIAL AREA
-  INDICATIVE LOCAL ROAD NETWORK

-  INDICATIVE STORMWATER MANAGEMENT RESERVE
-  INDICATIVE UTILITY RESERVE
-  PROPOSED LANDSCAPE BUFFER (5m)

-  PROPOSED LANDSCAPE BUFFER - ROAD BERM (5m)
-  VEHICLE CONNECTION TO AVENUE ROAD NORTH
-  CONVEYANCE SWALE

FIGURE



Landscape Buffer Planting - 3 to 5 years after planting

Landscape Buffer Planting - 10 to 15 years after planting



BOTANICAL NAME	COMMON NAME	ANTICIPATED 5-YEAR HEIGHT	ANTICIPATED 15 YEAR HEIGHT
<b>TREES</b>			
<i>Liquidambar styraciflua</i>	sweet gum	5 metres	9 x 4 metres
<i>Myrsine australis</i>	mapou	3 metres	5 x 3 metres
<i>Podocarpus totara</i>	tōtara	2 metres	5 x 2 metres (maturity 15m)
<i>Sophora tetraptera</i>	kowhai	5 metres	8 x 3 metres (maturity 10m)
<i>Acer (Maple)</i>	species	5 metres	10 x 6 metres (maturity 15m)
<i>Alnus species</i>	common	5 metres	10 x 6 metres (maturity 15m)
<i>Acacia melanoxylon</i>	blackwood	5 metres	10 x 6 metres (maturity 20m)
<b>SHRUBS</b>			
<i>Arthropodium cirratum</i>	renga renga		0.5 x 0.5 metres
<i>Coprosma robusta</i>	karamu	3 metres	5 x 4 metres
<i>Pittosporum eugenioides</i>	tarata	3 metres	12 x 4 metres
<i>Pittosporum tenuifolium</i>	kohuhu	4 metres	6 x 3 metres
<i>Macropiper excelsum</i>	kawakawa	2 metres	4 x 4 metres

**NOTES**

- Shrubs planted at 1.2m - 2m centres
- Trees planted at 5-7m centres.
- Excludes boundary planting on neighbouring property
- Detail design will need to take into account not to impede existing vegetation
- Cross section excludes swale planting
- Plant species indicative only and to be confirmed at time of design
- Plant growth rates are dependant on detailed planting design, climate, subdivision design, implementation and on going maintenance.















Viewpoint 4



Viewpoint 5



Viewpoint 6



Viewpoint 7



Viewpoint 8



Viewpoint 9



Viewpoint 10



Viewpoint 11