



te kaunihera ā-rohe o  
**matamata-piako**  
district council

# FREEDOM CAMPING IN THE MATAMATA-PIAKO DISTRICT



0800 746 467 | [mpdc.govt.nz](https://mpdc.govt.nz)

Get Council info straight to your inbox [mpdc.nz/signup](https://mpdc.nz/signup)

Version 1 | 24/01/24



## FREEDOM CAMPING IN THE MATAMATA-PIAKO DISTRICT

Matamata-Piako is one of New Zealand's visitor hot spots. We're a motor-home friendly district and we've got lots of unique attractions to explore.

New Zealand's freedom camping laws allow camping on all Council land and roads, unless it is prohibited through other methods (like a Bylaw or Reserve Management Plan).

We've put a Bylaw in place that strikes a balance between attracting and supporting tourism in our area, while also protecting people, access and special places in our district.

The main points to remember from Matamata-Piako's Freedom Camping Bylaw 2023 are that:

- Freedom camping is restricted to people in self-contained vehicles (i.e. not tents or other temporary structures), based on NZ Self-Contained Standards.
- There are some areas where people cannot freedom camp at all (these are called 'prohibited areas').
- There are some areas where people may freedom camp (called 'restricted areas'), with a maximum number of self-contained vehicles that can stay in each location.
- People can stay for a maximum of four nights in any specific location within a one-month period.
- People cannot freedom camp within 500m of a place they have previously camped within the last month.

To see all the areas where Freedom Camping is prohibited and restricted please go to: [mpdc.nz/freedomcampingmaps](https://mpdc.nz/freedomcampingmaps).

## RUBBISH AND RECYCLING

Transfer stations are open from 10am to 4pm on selected days:

### Matamata Transfer Station

220b Tauranga Rd, 07 888 5700; Tues, Wed, Thurs, Sat & Sun

### Morrinsville Transfer Station

168b Roache Road - 07 889 3401 - Monday, Tues, Thurs, Sat & Sun

### Waihou Transfer Station

4277 State Highway 26 - 07 884 8831 - Wed, Fri & Sun

All transfer stations will be closed on Good Friday, Anzac Day (until 1pm - transfer stations will be open after 1pm on ANZAC Day), Christmas Day, Boxing Day and New Years Day and 2 January.

For the latest information, go to [mpdc.nz/transferstations](https://mpdc.nz/transferstations).



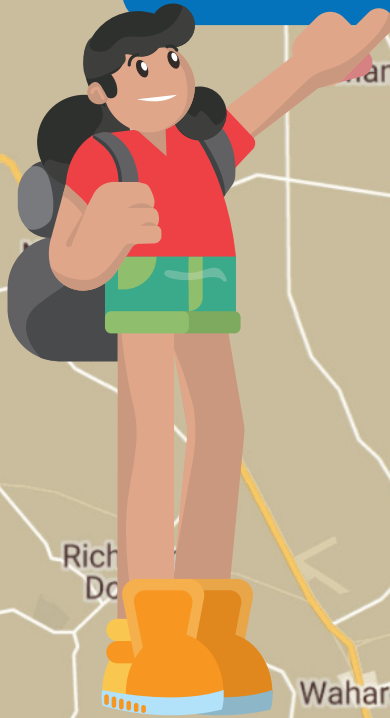
## CAMPERVAN DUMP STATIONS

We ask that visitors travelling in motorhomes or caravans dispose of their wastewater responsibly by visiting a dump station. Dump Stations are small facilities that are connected to the reticulated sewerage system, and help to protect the environment by ensuring waste from motor homes is disposed of correctly.

Council provides three dump stations in the Matamata-Piako District, they are located at:

- **Te Aroha** - Te Aroha Boat Ramp Reserve, Terminus Street
- **Matamata** - Rockford Street, off Tauranga Road
- **Morrinsville** - Morrinsville Recreation Grounds, Cureton St

# MATAMATA-PIAKO FREEDOM CAMPSITES

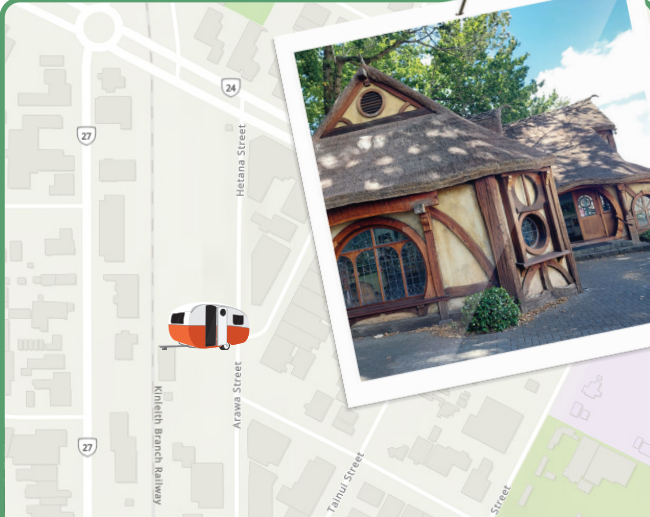




# FREEDOM CAMPING LOCATIONS


The following parks and reserves provide restricted spaces for camping, provided that signs and Bylaw rules are followed:

## MATAMATA WARD



A map of Matamata Ward showing the location of Hetana Street Reserve. The map includes roads such as Hetana Street, Arawa Street, and the Kaitiaki Branch Railway. A bus icon is placed on the map near the reserve. A photograph of a historic building with a thatched roof is pinned to the map with a red pushpin.

Hetana Street Reserve (near Railside by the Green)



A map of Matamata Ward showing the location of Wairere Falls Carpark on Goodwin Road. The map includes the Waihou River and Goodwin Road. A bus icon is placed on the map near the carpark. A photograph of a waterfall is pinned to the map with a red pushpin, and another photograph of a carpark is pinned to the map with a red pushpin.

Wairere Falls Carpark on Goodwin Road



A map of Matamata Ward showing the location of Pohlen Park on Western Street. The map includes roads such as Western Street and Elizabeth Street. A bus icon is placed on the map near the park. A photograph of a playground is pinned to the map with a red pushpin.

Pohlen Park on Western Street (main carpark)



*There are also low cost parks available at Firth Tower Museum and Reserve on Tower Road. This facility has a public toilet, security surveillance, large vehicle access, fresh water and powered sites.*



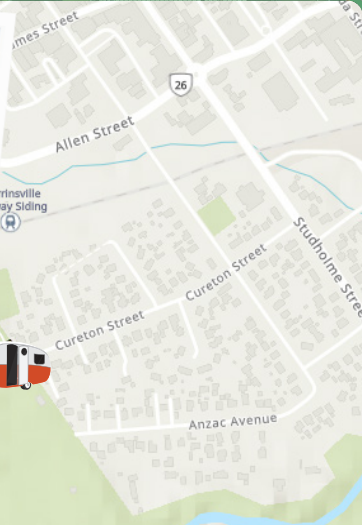
MORRINSVILLE WARD



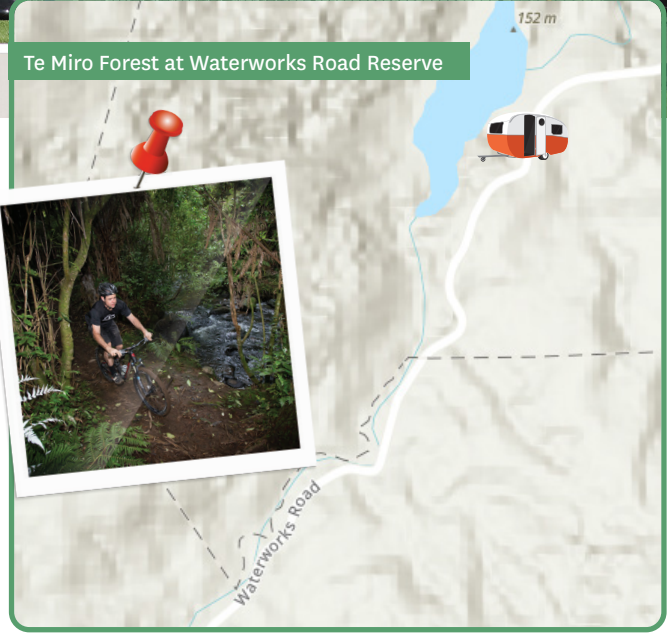
DID YOU KNOW?

There are 60 life-sized cow sculptures around the township, each designed by different artists - can you find them all?

Also, keep an eye out for Mabel, the 6.5m Mega Cow sculpture!



Morrinsville Recreation Ground (carpark) on Cureton Street



Te Miro Forest at Waterworks Road Reserve





## TE AROHA WARD



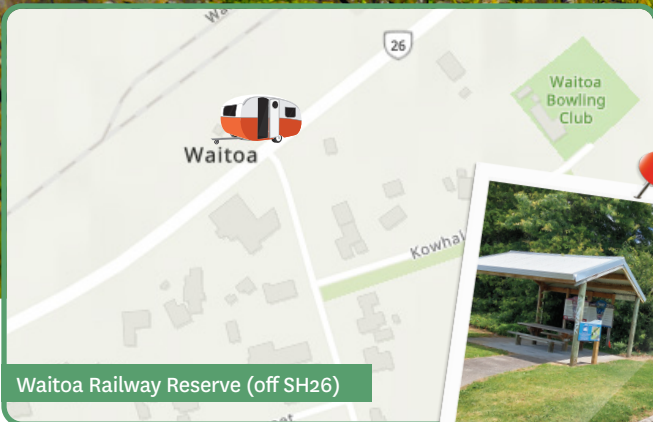
Boyd Park (off Spur Street behind the netball and tennis courts)



Waihou Recreation Reserve (off Ngutumanga Rd near rugby club)



Herries Memorial Park (in south-east corner of council carpark)



Waitoa Railway Reserve (off SH26)



Waiorongomai Track Carpark (off Waiorongomai Loop Road)



### DID YOU KNOW?

Gold was first discovered here in 1880, and you can still see signs of the mining activity around the Waiorongomai Valley tramping tracks.



# FREQUENTLY ASKED QUESTIONS

## What is freedom camping?

Freedom Camping means to camp on public property, within 200m of an area accessible by motor vehicle, or within 200m of the mean low-water springs line of any sea or harbour, or on or within 200m of a formed road or a Great Walks Track.

## What does self-contained mean?

This means a vehicle that meets the new requirements for self-containment. This has changed from the old system, and vehicles must now have a fixed toilet, water supply system, and ventilation system to be certified self-contained. More information about the changes made to the legislation can be viewed at [mbie.govt.nz/freedomcamping](http://mbie.govt.nz/freedomcamping).

## Why aren't there spaces for tents/vehicles that aren't self-contained?

In our district there are only a few spots with 24hr toilet facilities, and unfortunately none of them are suitable for camping. e.g. in the middle of a carpark, or on the side of the road.

Our Freedom Camping Bylaw leaves room to include appropriate non-self-contained areas if they become available in the future.

## Which areas are covered under the Bylaw?

The Bylaw applies to land and roads controlled or managed by Matamata-Piako District Council, that are subject to the Freedom Camping Act. It does not apply to private land or Department of Conservation land.

## What if people don't follow the rules?

Council has enforcement officers who will use education as their first tool. However, having a Bylaw gives council the ability to impose infringement fees and fines if people breach the Bylaw or the Freedom Camping Act 2011. Fines start from \$400 and go up to \$2,400. To see the full list of fines and other details of the Matamata-Piako Freedom Camping Bylaw, go to: [mpdc.nz/freedom-camping](http://mpdc.nz/freedom-camping).

