

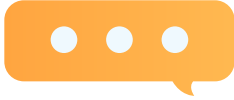


Te kaunihera ā-rohe o
matamata-piako
district council



Waitoa Water

INFORMATION BOOKLET 2025



Let's Talk – Waitoa Water Supply

The way water is supplied to Waitoa needs to change.

For many years, Fonterra Cooperative Group has provided water to about 130 residential homes in the area. However, given the requirements of the Water Services Act 2021, Fonterra has decided to no longer continue in this role.

This means the Waitoa community must now consider alternatives for how water will be supplied in the future. There are two main options:

- **Self-supply - where individual households or groups manage their own water systems**
- **Council supply - where Waitoa connects to the Council's existing water network**

But this isn't just about pipes and systems – it's about what matters to the people of Waitoa. They need safe and reliable drinking water – but they also need to know how much it will cost, who will manage the water, how much say locals will have, and whether different options are fair for different types of residents (homeowners, renters, large property owners, and others).

It's a complex issue that's been discussed in the community for some time, with a range of views and experiences to consider.

That's why Council is supporting the Waitoa community to determine what will happen next.

How does this affect me and my property?

The water supply decision will apply to all of the properties identified on the map - **see page 7**. That means:

- **If self supply is preferred, then it will be the property owner's responsibility to install their own water supply (if there isn't one already).**
- **If Council supply is preferred, then your property will pay for water services, whether or not you choose to connect to Council supply.**



What are we doing?

The affected Waitoa properties need to consider the options and decide how they will access water in the future. Because this is a decision that will apply to every affected property (i.e. if your property has been identified, there is no opting out), we do not want to rely on a method that could result in a small 51% majority. We want a much stronger mandate than that.

This is an important decision that will affect Waitoa residents for years to come. Council is supporting the community to ensure it is a robust decision that reflects the views of a broad range of community voices.

To do this, we're going to establish a community panel. The panel will be a group representative of the affected Waitoa residents/property owners (for example a mix of ages, genders, home owners, renters etc). With help from an independent facilitator, they will take a deeper look at the issues over a series of workshops, weigh up the opportunities and challenges of each water supply option and make recommendations for decision-making on behalf of the Waitoa community.

What will the panel decide?

The panel will be tasked with making recommendations on:

- Which water option is the best fit for Waitoa - Provide recommendations on the future water supply to Council for final decision making
- What matters most when choosing a water option - Identify what's important and should guide the decision – such as water reliability, safety, costs, responsibilities, and property and lifestyle impacts
- What help the community might need - shape advice on what kind of support Waitoa residents will need to transition to a new water supply

There will also be clear guidelines on things that the panel can't change or influence – for example, Fonterra is definitely stepping away from the water supply, and all water supply options must meet legal standards.



The panel will receive detailed information on future water supply options, and hear from a variety of speakers.



Who will be on the panel?

The panel will be made up of approximately 25 people. The aim is to get a “mini public” of Waitoa – a group that reflects the makeup of the community, with a mix of ages, genders, home owners, renters etc



How would the panel be selected?

Every residential household in Waitoa will receive an invitation to take part in the panel process.

That invitation will explain the issue, the role of the panel, and how to register interest. We'll promote the opportunity widely in Waitoa – including to those who haven't been involved in the discussions to date.

A third party will then take all expressions of interest – and draw out names to create a panel that reflects the makeup of the Waitoa community.



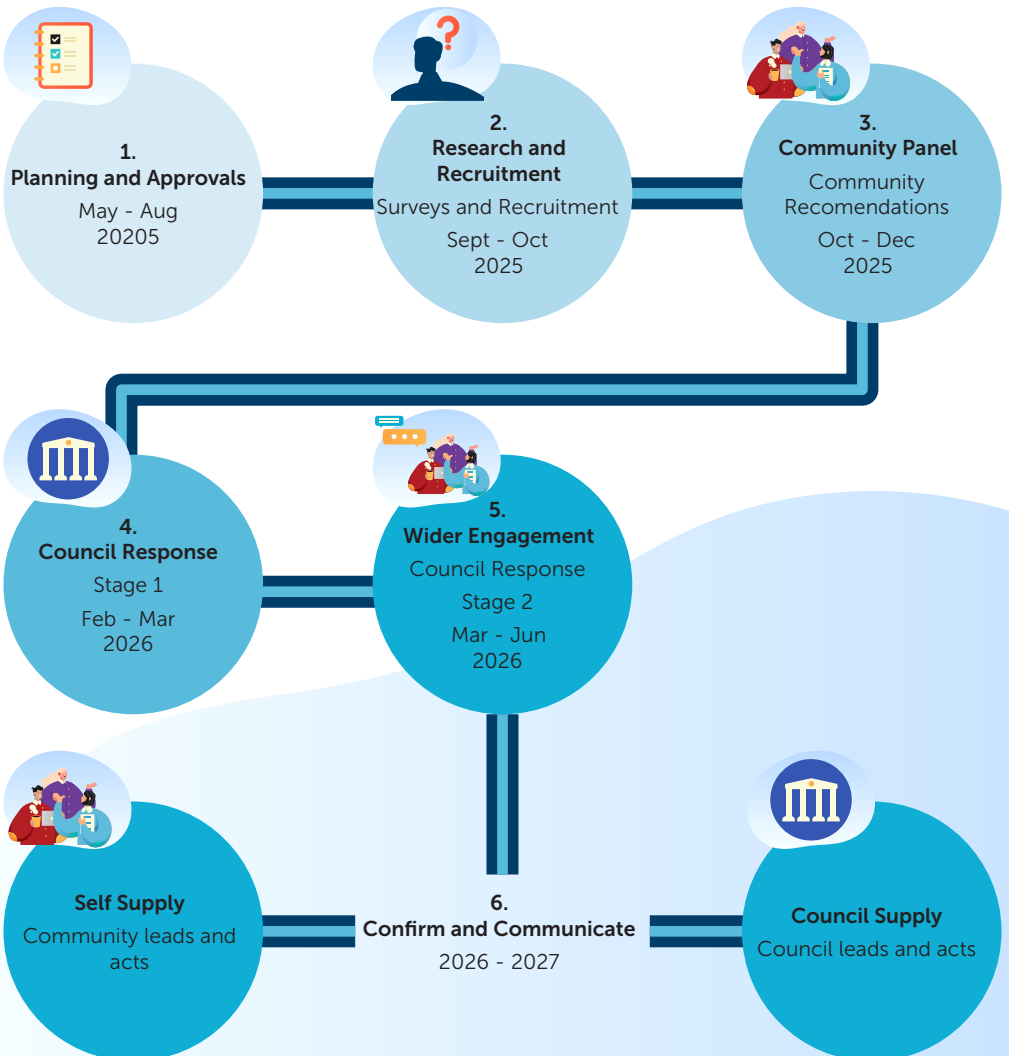
When will this take place?

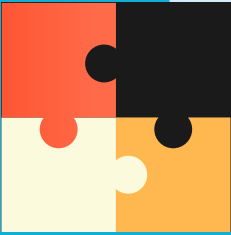
If Council water supply is preferred, this project will need to be included in the 2026/27 draft Annual Plan.

If we are to deliver on this, the panel would need to be sought and established in the next couple of months, and meet during October, November and probably early December to be in a position to make recommendations to Council.

Key steps in the process

This process map sets out the key steps for engaging the Waitoa community on their future water supply. It moves from early planning and community input, through deliberation and Council decision-making, to final implementation. Each phase builds towards a fair, inclusive and trusted outcome.





How will the current water reforms affect this?

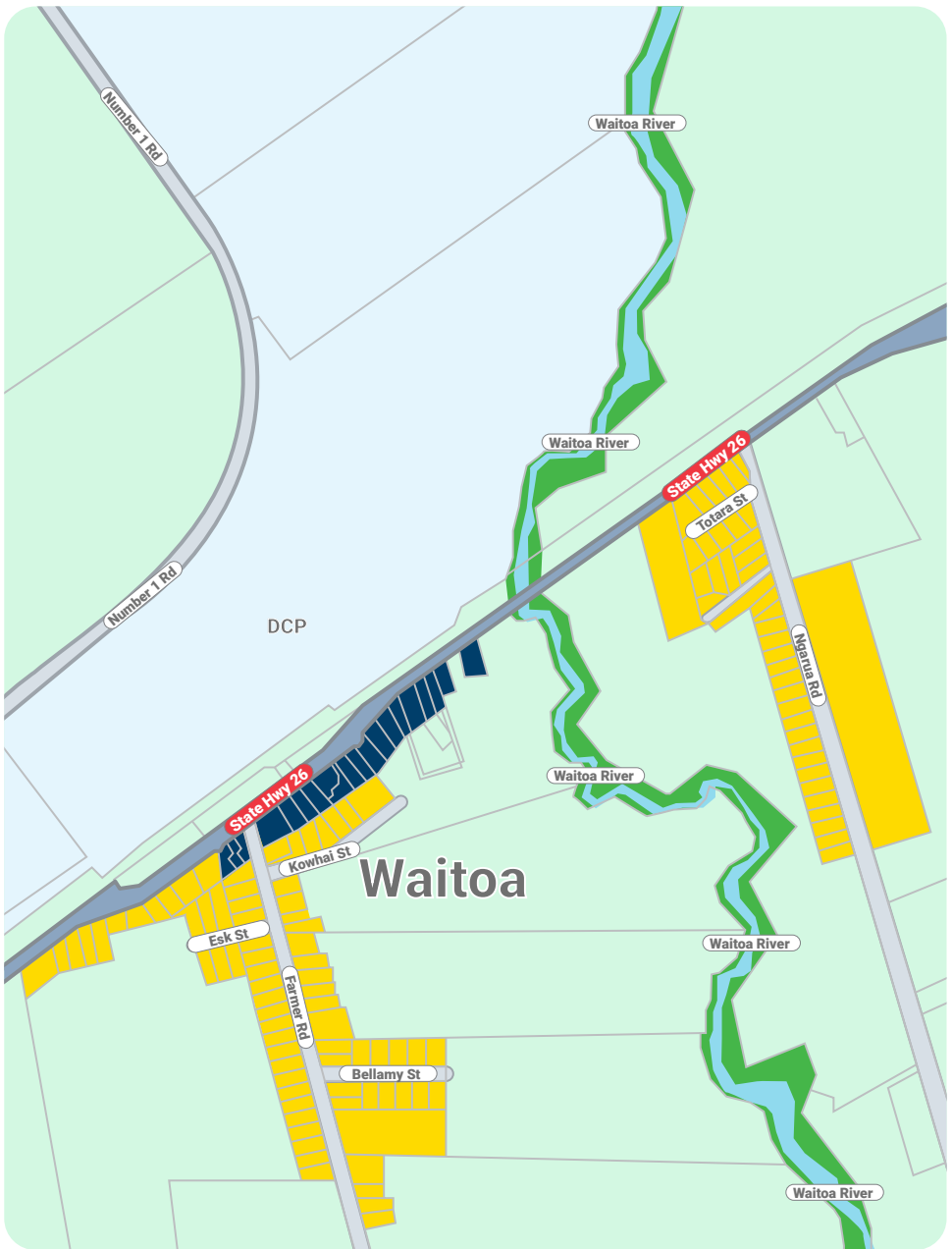
Water services are currently under review right across the country – with Councils deciding whether to continue delivering water and wastewater alone, or join forces with other Councils. MPDC is joining with six other Councils to establish Waikato Waters Limited (a Council Controlled Organisation) to deliver water services. At this stage it is expected that our water services will transfer to be managed by Waikato Waters Ltd in October 2026.

Setting up a new organisation, and aligning and prioritising the waters projects across six or seven districts is a massive undertaking. At the time of writing, it is difficult to predict what impact this will have for the Waitoa community.

If the Waitoa community chooses to connect to a Council water supply, it is likely that the timing to complete the connections will be determined by Waikato Waters Ltd, and we will use our position as a Shareholder to drive this project.

What won't change is:

- **The fact that Waitoa needs a safe and reliable water supply – Council, Waikato Water Ltd, Taumata Arowai are all aware that the Waitoa community needs a long term solution for their water supply. We are committed to working together to identify the solution.**
- **The decision - If the community opts to connect Waitoa to the Council water supply, we will use our position as a Shareholder of Waikato Waters Ltd to drive this project.**



Affected properties:



Residential Precinct



Business Precinct



You're invited to join the conversation!



Te kaunihera ā-rohe o
matamata-piako
district council

mpdc.govt.nz