



2009-2019

Long-Term Council Community Plan Volume One



part 6: general information

part 6: general information

General information	2006	2007	2008
Area	175,300 hectares	175,300 hectares	175,300 hectares
Population	31,200	31,200	31,512
Number of electors (enrolled)		21,159	
Number of wards	3	3	3
Number of urban areas	5	5	5
Total rateable properties	13,183	13,687	14,225
Value of improvements	1,891,577,200	1,890,798,250	2,892,320,390
Net land value	2,937,538,500	2,950,502,200	5,954,588,400
Net capital value	4,828,336,750	4,865,013,250	8,846,908,790
Total rates	20,726,613	22,694,688	24,768,576
Average total rates per property	1,572	1,658	1,741
Capital expenditure			
- New capital	9,125,965	6,292,146	3,254,329
- Renewals	5,293,787	6,630,838	8,529,568
Public debt (internal and external)	19,691,000	23,755,000	32,346,000
Number of staff			137.5
Roading			
- Sealed roads	932.4	934.9	
- Unsealed roads	58.4	58.4	
- Total	990.8	993.3	
Wastewater			
- Number of public systems			4
- Water reticulation length (km)			189
- No. of connections to the public system			8,893
Water supply			
- Number of public systems			7
- Water reticulation length (km)			312
- No. of connections to the public system			9,544
Stormwater (Urban)			
- km of piped drains			
- km of open drains			126.4 (piped and open drains)
Community Facilities			
- Sportsfields	11	11	11
- Neighbourhood reserves	46	46	46
- Public toilets	22	22	21
- Community Halls	26	25	23
Number of swimming pool visits			
- Wyborn	25,946	37,958	29,464
- Te Aroha Domain Spas	15,956	26,350	23,213
- Matamata Sports Centre	25,437	37,902	44,741
- Morrinsville Pools (Only open 3 months)	unknown	4,564	8,051



2009-2019  
Long-Term Council Community Plan Volume One

appendices

## appendix one: management structure

### Council Management Team



Chief Executive  
Officer  
Mr D McLeod  
(Don)



Infrastructure  
Manager  
Mr G Ridley  
(George)

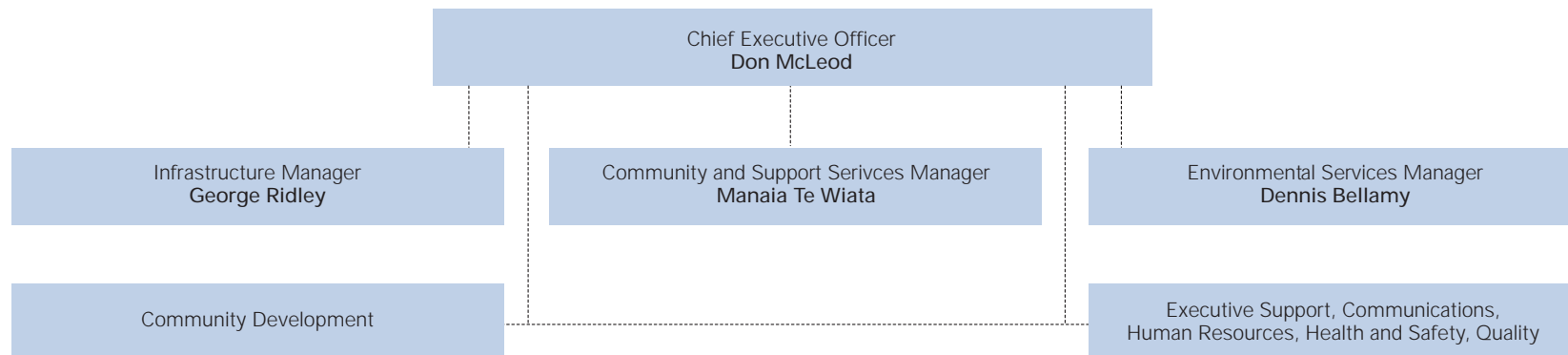


Environmental Services  
Manager  
Mr D Bellamy  
(Dennis)



Community and  
Support Services  
Manager  
Mr M Te Wiata  
(Manaia)

### Management Structure



## appendix two: animal control response

### Expected response times

Complaint	0800 - 1700	1700 - 0800	Weekend/Holiday
Unregistered	24 hr	NWD	NWD
Aggressive dog	30 min	1 hr	1 hr
Rushed/person	30 min	1 hr	1 hr
Rushed/vehicle	1 hr	NWD	2 hr
Threatening	1 hr	NWD	2 hr
Biting dog	30 min	1 hr	1 hr
Stock worrying	1 hr	2 hr	2 hr
Barking dog	1 hr	NWD	14 hr
Uncared for	24 hr	NWD	24 hr
Wandering	1 hr	14 hr	14 hr
Stock	1 hr	1 hr	1 hr
Dog caught in trap	1 hr	1 hr	1 hr

NWD - Next working day

## appendix three: assessments of water, sanitary services and waste management plan

Assessments were undertaken in 2005 for public toilets, cemeteries, water supplies, wastewater and stormwater. Further the waste management plan was prepared in 2005/06. A summary is outlined below of those assessments. These assessments are still current and valid with projects still to be completed. It is proposed that a review will be undertaken in readiness for the next LTCCP.

### Summary of assessments of water and sanitary services

#### Cemeteries

Council has six cemeteries. Four are open, being the Piako Cemetery, Matamata, Te Aroha and Maukoro Cemetery. Two are closed at Morrinsville and Walton. The main issue that council will face is the increase in deaths in the district. Council's options for this include designating more land for cemetery purposes or providing further ash walls in the open cemeteries.

As part of this LTCCP provision has been made for cemetery expansions in 2012 and improvements over the next three years. Drainage works have been completed at the Te Aroha Cemetery.

#### Public toilets

Several toilets scored less than adequate in one or more fields of safety/security, hygiene, convenience, privacy and equality and were identified as a priority for upgrading. Four toilets were identified less than adequate in hygiene. To date Council has provided funding to upgrade toilets in Matamata, Morrinsville and Waharoa and closed toilets in Morrinsville and the Rapurapu reserve. Additional funding is provided in this plan for toilet upgrades in Morrinsville.

#### Water supply

As part of the assessment the majority of those surveyed said they were satisfied or very satisfied with reliability of the districts water supply; they get value for money through water clarity. Over half support installation of metering to manage demand.

There are many risks and issues in providing quality water supplies including the risk of downgraded supplies when reviewed against the Drinking Water Standards; the need to demonstrate conservation measures to achieve renewed consents; the potential for degradation and contamination of surface and ground water; and the future security of the supply.

A number of proposals have been undertaken to address the risks and issues as part of the 2006 LTCCP including:

- Improved monitoring to achieve Drinking Water Standards
- Treatment plant upgrades for Matamata, Morrinsville and Te Aroha
- Community water supply upgrades at Te Poi and Tahuna
- New water source at Matamata
- Extensions to water supply reticulation at Te Aroha

It is proposed as part of this LTCCP that the following be undertaken:

- Watermain replacements occur over the next three years
- An upgrade to a small community supply be undertaken in 2010
- A new water reservoir be provided at Morrinsville

#### Wastewater

There are many risks and issues in providing a quality wastewater system. These vary between the public wastewater system and private systems. To manage these associated with the public system Council has:

- Upgraded Te Aroha wastewater system
- Been working through resource consent processes for Matamata and Morrinsville wastewater system
- Undertaken trunk main replacements at Te Aroha
- Put in place the monitoring of trade waste discharges

In addition it is proposed as part of this plan to put in place:

- A sludge de-watering facility
- Matamata treatment plant upgrade to meet compliance of resource consent
- A renewal programme for pipe replacements

As part of the assessment a number of options for the private systems included:

- Providing regular information and promotion of septic tank management
- Establishment of a septic tank inspection system to identify poorly performing tanks and require remedial action by owner
- Undertake routine cleaning of all septic tanks

In addition to the above Council:

- Has provided reticulation for Rukumoana
- Is providing a wastewater system and reticulation in Tahuna this year
- Proposing a wastewater system and reticulation for Waharoa
- Proposing the connection of the Waihou wastewater system to Te Aroha

## appendix three: assessments of water, sanitary services and waste management plan

### Stormwater

This was assessed as a lower risk to public health than water and wastewater. Issues and options for stormwater include:

- Further development of stormwater systems to allow for residential and industrial growth
- Review major open drains in town areas which may pose a risk to children
- Identification of recreational swimming areas and risks associated with upstream stormwater discharges
- Monitor impacts on water quality from discharges of stormwater in water catchment areas.

### Stormwater upgrades:

- Undertaken in Aroha View Avenue in Te Aroha
- Undertaken in Matamata (stage 3 Firth St/Short St reticulation)
- Undertaking the first stage of putting in place a new stormwater system for Matamata
- Proposed in Matamata to reduce flooding as part of this plan. This includes improvements to the industrial area and stage 2 of a new stormwater system
- Proposed in Morrinsville for improvements as part of this plan

### Summary of assessment of waste management plan

#### Waste management plan

The waste management plan was developed from Council's adopted Strategy which was developed in conjunction with a consultative working party in 2005/2006

In summary it provided for a program of action which included:

- Reduction in waste disposed to landfill
- Investigate providing composting facilities
- Support the regional 'Business Waste Minimisation Advisory Service'
- Acknowledge good business waste practices
- Adopt a public education programme

The Waste Minimisation Act 2008 has come into effect recently, and a review of the existing waste management plan is being undertaken. This will include the establishment of a working party this year with the view that the plan will proceed through the special consultative process through the 2010 Annual Plan.

## appendix four: rates examples - GST inclusive

Urban Sample 1 - Capital Value \$250,000

	2008/2009	2009/2010
General Rate	354.13	351.75
Uniform Annual General Charge	362.08	384.71
Other Targeted Rates	31.24	31.81
<b>Total of non Utilities Rates</b>	<b>\$747.45</b>	<b>\$768.27</b>
Targeted Water Rate	284.35	286.54
Targeted Waste Water Rate	380.42	472.88
Targeted Solid Waste Rate	173.26	181.02
Targeted Stormwater Rate	150.65	130.24
<b>Total of Utilities Rates</b>	<b>\$988.68</b>	<b>\$1070.68</b>
<b>Total of all Matamata Piako District Council Rates</b>	<b>\$1736.13</b>	<b>\$1838.95</b>

Urban Sample 2 - Capital Value \$450,000

	2008/2009	2009/2010
General Rate	637.38	633.15
Uniform Annual General Charge	362.08	384.71
Other Targeted Rates	19.72	20.47
<b>Total of non Utilities Rates</b>	<b>\$1019.18</b>	<b>\$1038.33</b>
Targeted Water Rate	284.35	286.54
Targeted Waste Water Rate	380.42	472.88
Targeted Solid Waste Rate	173.26	181.02
Targeted Stormwater Rate	150.65	130.24
<b>Total of Utilities Rates</b>	<b>\$988.68</b>	<b>\$1070.68</b>
<b>Total of all Matamata Piako District Council Rates</b>	<b>\$2007.86</b>	<b>\$2109.01</b>



appendix four: rates examples - GST inclusive

Rural Sample 1 - Capital Value \$1,000,000

	2008/2009	2009/2010
General Rate	1416.50	1407.00
Uniform Annual General Charge	362.08	384.71
Other Targeted Rates	31.72	32.47
<b>Total of non Utilities Rates</b>	<b>\$1810.30</b>	<b>\$1824.18</b>

Targeted Water Rate		
Targeted Waste Water Rate		
Targeted Solid Waste Rate		
Targeted Stormwater Rate		
<b>Total of Utilities Rates</b>	<b>0</b>	<b>0</b>

<b>Total of all Matamata Piako District Council Rates</b>	<b>\$1810.30</b>	<b>\$1824.18</b>
---	------------------	------------------

Rural Sample 2 - Capital Value \$4,000,000

	2008/2009	2009/2010
General Rate	5666.00	5628.00
Uniform Annual General Charge	362.08	384.71
Other Targeted Rates	94.08	94.08
<b>Total of non Utilities Rates</b>	<b>\$6122.16</b>	<b>\$6106.79</b>

Targeted Water Rate		
Targeted Waste Water Rate		
Targeted Solid Waste Rate		
Targeted Stormwater Rate		
<b>Total of Utilities Rates</b>	<b>0</b>	<b>0</b>

<b>Total of all Matamata Piako District Council Rates</b>	<b>\$6122.16</b>	<b>\$6106.79</b>
---	------------------	------------------



2009-2019  
Long-Term Council Community Plan Volume One

glossary

## glossary

**Activity:** Goods or services provided by or on behalf of Council

**Activity groups:** Related activities grouped together under a single category, such as 'Community Infrastructure'

**Annual plan:** Contains the Council's proposed budget and funding impact statement for one financial year. Identifies any variation from the financial statements and funding impact statement included in Council's current LTCCP for that year

**Annual report:** A report that the Council prepares once a year to assess performance against its objectives, activities, performance targets and budgets outlined in the LTCCP

**Asset:** A resource controlled by Council, such as a park, road, stormwater system, water or wastewater plant

**Asset management plans:** Plans that provide operational guidance concerning service standards, maintenance and capital costs for assets

**Assumptions:** A statement that is used as the basis for making particular predictions that may or may not occur

**BERL:** Business and Economic Research Limited

**Capital expenditure:** Money spent to build or buy a new asset or to improve the standard of an existing asset

**Community outcomes:** A set of aspirations that reflect the communities desires for economic, social, environmental, and cultural wellbeing

**Community wellbeing:** The overall wellbeing of the community including economic, cultural, social and environmental wellbeing

**Council Controlled Organisation (CCO):** An organisation in which one or more local authorities owns or controls 50% or more of the voting rights or has the right to appoint 50% or more of the directors of the organisation. Matamata-Piako District Council is one of 13 local authority shareholders in Local Authority Shared Services Limited, a Council Controlled Organisation

**Development contributions:** A contribution from developers to cover the cost of servicing growth

**District Plan:** A detailed plan of the way the district's environment will be managed to achieve the purpose and principles of the Resource Management Act 1991

**Environment Waikato (EW):** Waikato Regional Council

**Equity:** A financial term, also known as net worth. The total value of assets less total liabilities

**Funding impact statement:** A document that includes information that discloses revenue and financing mechanisms and indicates the level or amount of funds to be produced by each mechanism

**Levels of service:** The service parameters or requirements for a particular activity. Service levels usually relate to quality, quantity, reliability, responsiveness, environmental acceptability and cost

**LGA:** Local Government Act 2002

**Long-Term Council Community Plan (LTCCP):** A ten year plan adopted every three years under section 93 of the Local Government Act 2002. It describes Council's activities, why it participates in these activities and how the activities will be funded. It includes information, which is regarded as the Annual Plan for the first year to which it relates and is reported on through the Annual Report

**PNZ:** Power New Zealand fund

**RMA:** Resource Management Act 1991